



Glee Weller

June 27, 1957 - December 31, 2018

Glee Weller , 61, of Grove City, formerly of Hooker and Butler, passed away Monday, December 31, 2018 at Butler Memorial Hospital.

She was born June 27, 1957 in Butler, PA, the daughter of the late John C. Weller and the late Jeanne (Bell) Weller.

Glee had been a member of Concord Presbyterian Church and was a graduate of Moniteau High School and Clarion University. She had worked at USIS and had bartended at the Rusty Nail for many years. She loved her cats and had taken in many strays.

Surviving are her sister, Gail (Terry) Sheftic of Lower Burrell, niece and nephews, Stephen (Liz) Scheftic, Deborah (Brad) Hurlburt, and William (Martha) Scheftic; 6 great nieces and nephews, Ryan, Adam, Sarah, Simone, Rebecca, and Violet.

Friends will be received at Young Funeral Home, Ltd., 127 W. Jefferson St., Butler, on Thursday, January 3, 2019 from 2-4 & 6-8 PM.

Private services and burial.

Contributions may be made to the Butler Co. Humane Society, 1015 Evans

City Rd., Renfrew, PA 16053.

Tribute Wall

JA

“ I will never forget the kindness and love that Glee spread to everyone around her. I was lucky enough to call her my friend where she had me sleep on her couch many times after we closed working at The Rusty Nail. I didn't want to make the drive back to Slippery Rock after work, and we spent many, many Friday or Saturday nights talking and laughing late into the next day. What an incredible friend you were to me Glee. You helped me in more ways than I ever expressed to you. And I never thanked you enough for looking out for me and making me feel safe at your place. I know you must be so happy now, and I hope you are surrounded by love, happiness, and cats!
Your friend from so long so,
Jackie

jackie - July 12, 2021 at 10:08 PM

KH

“ For every laugh, cry, smile, hug, adventure, long talk on the phone, word of encouragement, every memory that I will cherish forever, thank you my friend. I miss you more than I can ever say. Click your heels three times, buddy....you're home.

Karen Henderson - January 31, 2019 at 10:27 AM



“ 2 files added to the album Memories Album



Debora Robson - January 19, 2019 at 02:55 AM



“ 1 file added to the album *Life Tributes*



Debora Robson - January 03, 2019 at 09:13 PM



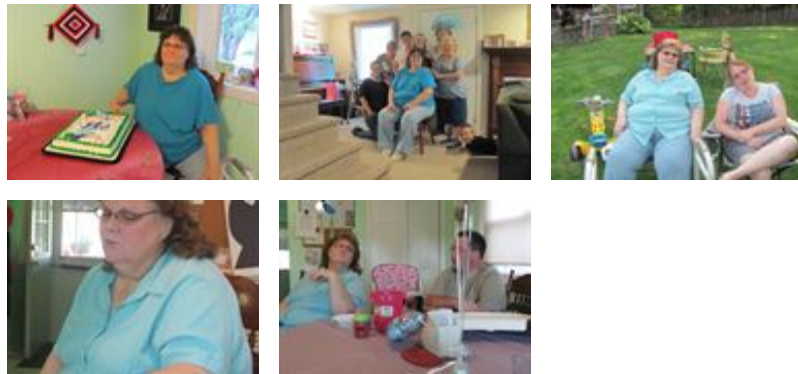
“ 1 file added to the album *Life Tributes*



Bill Scheftic - January 03, 2019 at 07:53 PM



“ 35 files added to the album *Life Tributes*



Young Funeral Home - January 03, 2019 at 09:25 AM



“ So sad to hear this news
The Weller home was our second home- the place we all ended our evenings and the general meeting place where we started our night out.
Thank you Glee for being our friend and enriching our lives with laughter, joy and fond memories
😭

Rick Metz - January 02, 2019 at 09:59 AM



“ Glee and the Weller home was the second home to most of kids I've grown up with and was central to the imprinting of what friendship means!
Most Evenings out was ended at by stopping at Glee's ..she and her home was our meeting place. I can't imagine a childhood growing up without her..

Rick Metz - January 02, 2019 at 09:30 AM



“ From the time I got my butt paddled for crossing Rt 38 to go play with the 2 fun sisters from church, there were many years of laughing, singing (the Monkees & the Monster Mash! & Neil Diamond), prank playing, Chef Boyardee Pizza, Halloweening, sleeping out in your back yard, Incredible Edibles, Monopoly on rainy days, Ouija board sessions, tanning in the summer, hikes to the strip mine swimming hole via the railroad tracks, hanging out around the elementary school, hiking out to Coopers farm, playing in he woods, bicycling to the tasty freeze!
Gail & Glee were a big part of what I've considered an idyllic childhood. Glee epitomized her name. Her infectious giggle & broad smile ever stuck in my memories. Gail, I'm so sorry for your loss.
Thanks for the memories. Love, Deb

Debora Robson - January 02, 2019 at 02:46 AM

GS

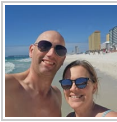
Deb, thanks so much for your comments. Although I haven't heard from you in years, your memories of our childhood are exactly like mine!

Gail Scheftic - January 02, 2019 at 02:27 PM

VL

Glee was always there- the fun times we had as children at Concord church under the watchful eyes of Pearl and Bessie and Rosanne Deary-to all the fun get togethers after school. She will no doubt be missed by the community as by her friends and family. Rest In Peace dear Glee

vickie lee - January 02, 2019 at 03:45 PM



Thank you for your kind words and insight, Deb. Fun to get a picture of mom and Glee as kids. Aunt Glee was a wonderful person who made every room come alive. Her laugh and perpetual youthful exuberance will live on in our hearts forever, and she is already deeply missed.

Steve Scheftic - January 02, 2019 at 09:45 PM

KD

“ *Gail, I am so sorry to hear about this loss. Glee was aptly named for even after all these years what I remember most was her laughter and sense of fun. You and your family have my deepest sympathy.*

Kathleen McDevitt Davis

Kathleen Davis - January 02, 2019 at 12:59 AM

BC

“ *Oh boy, back in the day---what fun we had & what good friends we were for so many years. Gail, I am so sorry for your loss. I hope Glee has found peace. My sincere sympathy...*

Becky Christie

Becky Christie - January 01, 2019 at 10:13 PM

LS

“ Glee, we’ve been friends since 7th grade orientation...I’ll miss that laugh, that look you got when you had something smart/sarcastic/hilarious to say. I’ll miss you. Gail and family, I am so very sorry for your loss.
Luellen (Toth) Schmidt

Luellen Schmidt - January 01, 2019 at 09:39 PM

D(

“ You always made me laugh, it was always so much fun . Your basement was just the start, of what our lives we're to become ..So many memories of you "GleeBell" ..Luv ya girlfriend, and I will miss you like hell..

Donna (Luffy)Smith - January 01, 2019 at 07:56 PM